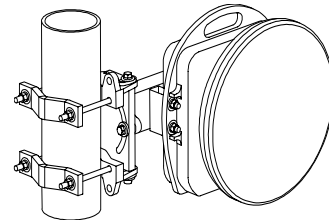


## HXI, Gigalink™ 6651eJ Specifications

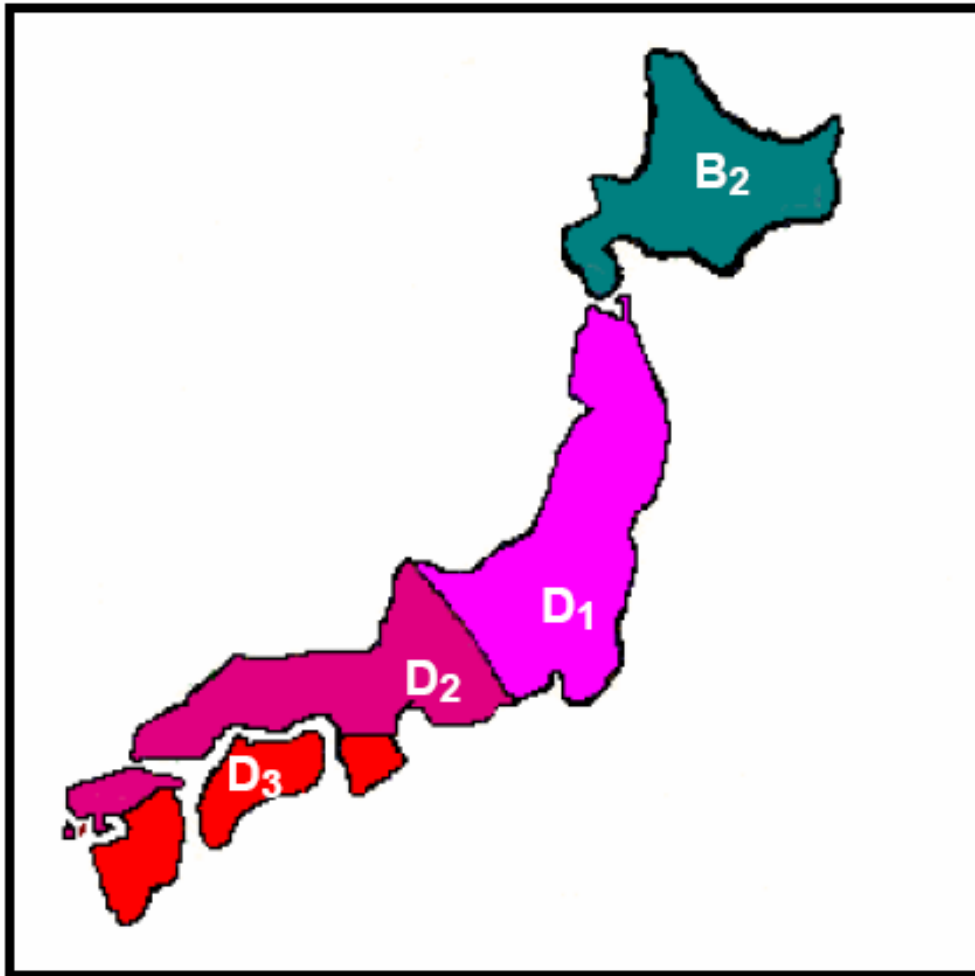
**High-Performance 1.25Gbps 60GHz Radio Link  
for MPT, Low Power, unlicensed deployment**



<b>Operating Range</b>	6651eJ
Minimum to Maximum Distance	300 m to 1,142 m
<b>Millimeter Wave Performance</b>	6651eJ
Frequency	59.0 to 66.0 GHz
RF Injection Power into Antenna	10mW (+10dBm) Max
Antenna Type	Integral 13-in. parabolic
Antenna Gain	43dBi Minimum
3-dB Beam Width	0.9 degree
<b>Interfaces</b>	
Payload Interface	Gigabit Ethernet, 1000Base-SX, 850 nm, FC connector
Management	100Base-FX, MMF, 1310 nm, FC connector
Installation	10Base-T, RJ-45 Modular (with adapter cable)
DC Power	MIL-C-5015-type connector for 14- to 18-AWG three-conductor power cable
<b>Management</b>	
Installation Tools	Laptop-based GUI software provided
Remote Monitoring	via SNMP V1 or PC Based GUI
<b>Regulatory Compliance</b>	
Spectrum Rules	MPT Type 1 , Item 31-2 , low power, unlicensed system
Electrical	UL - UL60950, EN-60950-1, IEC 609050-1
EMC	EN 55022, Emissions Class A, EN 301 489 Immunity
Laser Safety	CDRH - Class 1 (21 CFR 1040 per Laser Notice No. 50)
<b>Power</b>	
Input Voltage	-48 VDC nominal (-40 to -57 VDC)
Power Consumption	70W Max.
Maximum Input Current	1.5 Amps
<b>Environmental &amp; Mechanical</b>	
Operating Temperature	-30°C to 60°C (-22°F to 140°F)
Storage Temperature	-30°C to 85°C (-22°F to 185°F)
Relative Humidity	Up to 95%, non-condensing
Transceiver H x W x D	13.6 x 13.7 x 7.7 in. (34.5 x 34.8 x 19.6 cm)
Mount Lever Arm***	11 in. (28 cm)
Transceiver Weight	12 lbs (5.5 kg)

## HXI, Gigalink™ 6651eJ Range Specifications

Statistical Availability and range performance vs. region of operation



Model	SLA	A	B	B <sub>1</sub>	B <sub>2</sub>	C	D <sub>1</sub>	D <sub>2</sub>	D <sub>3</sub>	E	F	H
Gigalink 6651eJ	<i>Range 300- 1,142 meters clear air</i>											
	99.90%	1,090	1,040	1,057	1,025	1007	970	914	840	751	1,040	627
	99.99%	970	862	903	829	859	748	683	632	558	833	430
	99.999%	790	650	700	610	588	679	520	488	437	625	N/A

*Recommended ranges and statistical availabilities based on "Crane" Model calculations using published annual rain rates. Precision terminal alignment of +/- 0.45° is required to achieve predicted reliability at referenced ranges of operation.*

HXI, LLC  
12 Lancaster County Road  
Harvard, MA 01451  
USA  
(978)772-7774, [www.hxi.com](http://www.hxi.com)