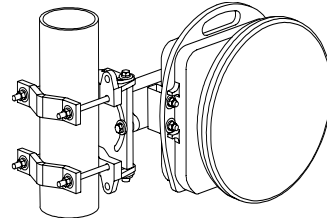


HXI, Gigalink™ 6451eJ Specifications

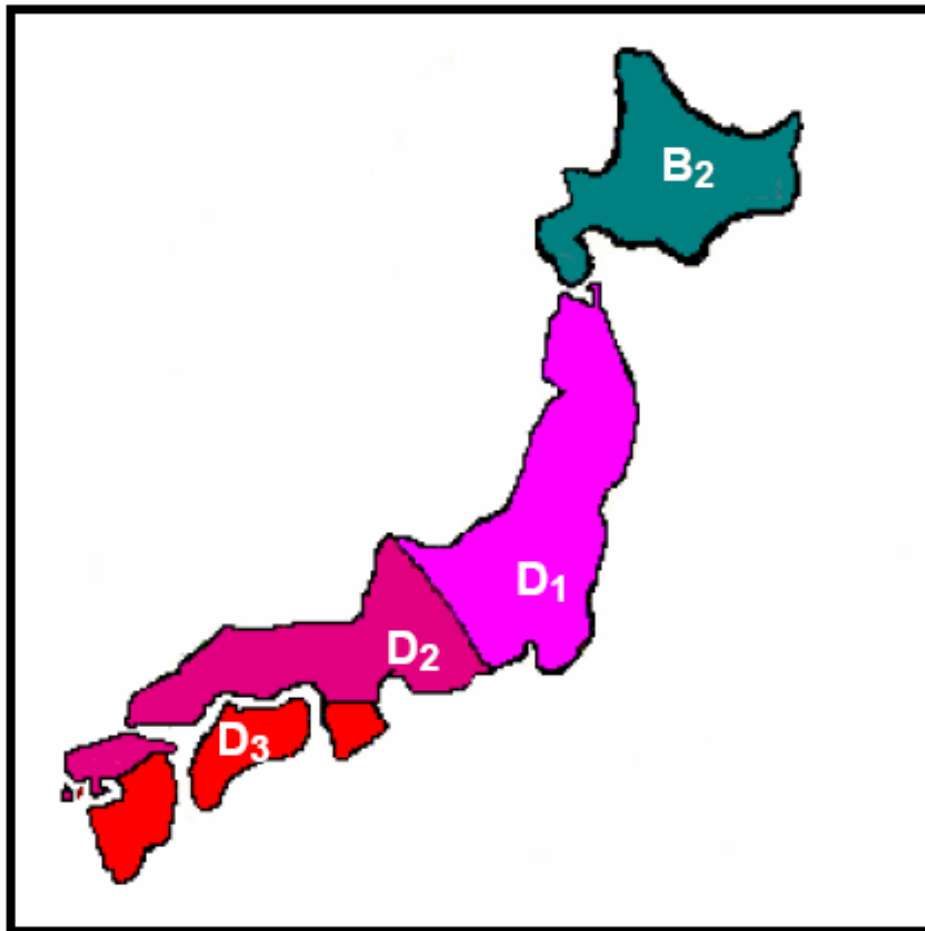
**High-Performance 1.25Gbps 60GHz Radio Link
for MPT, Low Power, unlicensed deployment**



| | |
|---------------------------------------|---|
| Operating Range | 6451eJ |
| Minimum to Maximum Distance | 20 m to 440 m |
| Millimeter Wave Performance | 6451eJ |
| Frequency | 59.0 to 66.0 GHz |
| RF Injection Power into Antenna | 10mW (+10dBm) Max. |
| Antenna Type | Integral 13-in. parabolic |
| Antenna Gain | 41dBi Minimum |
| 3-dB Beam Width | 0.9 degree |
| Interfaces | |
| Payload Interface | Gigabit Ethernet, 1000Base-SX, 850 nm, FC connector |
| Management | 100Base-FX, MMF, 1310 nm, FC connector |
| Installation | 10Base-T, RJ-45 Modular (with adapter cable) |
| DC Power | MIL-C-5015-type connector for 14- to 18-AWG three-conductor power cable |
| Management | |
| Installation Tools | Laptop-based GUI software provided |
| Remote Monitoring | via SNMP V1 or PC Based GUI |
| Regulatory Compliance | |
| Spectrum Rules | MPT Type 1 , Item 31-2 , low power, unlicensed system |
| Electrical | UL - UL60950, EN-60950-1, IEC 609050-1 |
| EMC | EN 55022, Emissions Class A, EN 301 489 Immunity |
| Laser Safety | CDRH - Class 1 (21 CFR 1040 per Laser Notice No. 50) |
| Power | |
| Input Voltage | -48 VDC nominal (-40 to -57 VDC) |
| Power Consumption | 70W Max. |
| Maximum Input Current | 1.5 Amps |
| Environmental & Mechanical | |
| Operating Temperature | -30°C to 60°C (-22°F to 140°F) |
| Storage Temperature | -30°C to 85°C (-22°F to 185°F) |
| Relative Humidity | Up to 95%, non-condensing |
| Transceiver H x W x D | 13.6 x 13.7 x 7.7 in. (34.5 x 34.8 x 19.6 cm) |
| Mount Lever Arm*** | 11 in. (28 cm) |
| Transceiver Weight | 12 lbs (5.5 kg) |

HXI, Gigalink™ 6651eJ Range Specifications

Statistical Availability and range performance vs. region of operation



| Model | SLA | A | B | B ₁ | B ₂ | C | D ₁ | D ₂ | D ₃ | E | F | H |
|-----------------|---|-----|-----|----------------|----------------|-----|----------------|----------------|----------------|-----|-----|-----|
| Gigalink 6451eJ | <i>Range 20- 440 meters clear air</i> | | | | | | | | | | | |
| | 99.90% | 420 | 405 | 410 | 400 | 395 | 390 | 375 | 355 | 330 | 405 | 290 |
| | 99.99% | 390 | 360 | 370 | 350 | 340 | 330 | 315 | 295 | 265 | 355 | 200 |
| | 99.999% | 345 | 305 | 320 | 295 | 285 | 270 | 250 | 235 | 215 | 215 | 130 |

Recommended ranges and statistical availabilities based on “Crane” Model calculations using published annual rain rates. Precision terminal alignment of +/- 0.45° is required to achieve predicted reliability at referenced ranges of operation.

HXI, LLC
12 Lancaster County Road
Harvard, MA 01451
USA
(978)772-7774, www.hxi.com