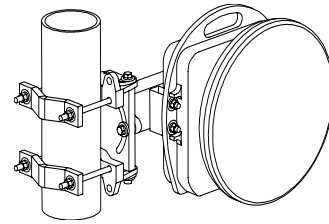


HXI, Gigalink™ 6451 Specifications

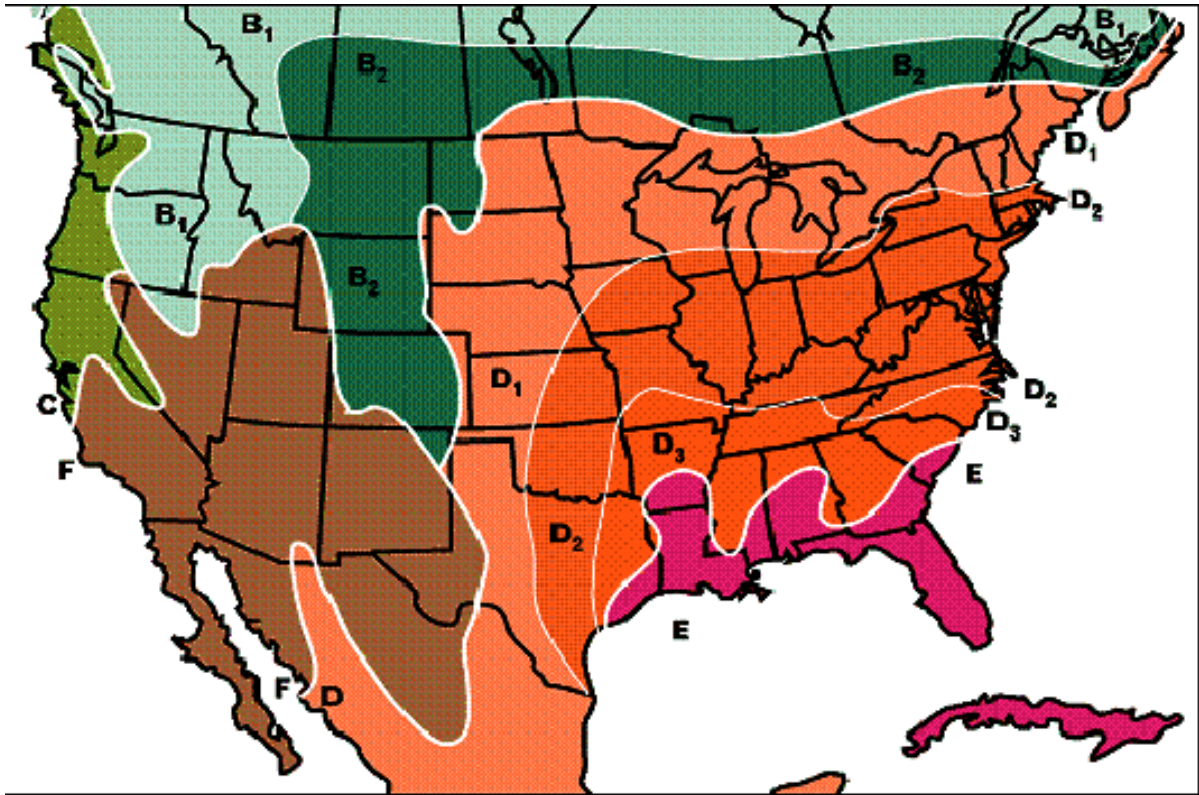
**High-Performance 1.25Gbps 60GHz Radio Link
for Unlicensed deployment**



Operating Range	6451
Minimum to Maximum Distance	20 m to 440 m
Millimeter Wave Performance	6451
Frequency	57.0 to 64.0 GHz
RF Injection Power into Antenna	10mW (+10dBm)
Antenna Type	Integral 13-in. parabolic
Antenna Gain	41dBi Minimum
3-dB Beam Width	0.9 degree
Interfaces	
Payload Interface	Gigabit Ethernet, 1000Base-SX, 850 nm, FC connector
Management	100Base-FX, MMF, 1310 nm, FC connector
Installation	10Base-T, RJ-45 Modular (with adapter cable)
DC Power	MIL-C-5015-type connector for 14- to 18-AWG three-conductor power cable
Management	
Installation Tools	Laptop-based GUI software provided
Remote Monitoring	via SNMP V1 or PC Based GUI
Regulatory Compliance	
Spectrum Rules	REC (09)01))
Electrical	UL - UL60950, EN-60950-1, IEC 609050-1
EMC	EN 55022, Emissions Class A, EN 301 489 Immunity
Laser Safety	CDRH - Class 1 (21 CFR 1040 per Laser Notice No. 50)
Power	
Input Voltage	-48 VDC nominal (-40 to -57 VDC)
Power Consumption	70W Max.
Maximum Input Current	1.5 Amps
Environmental & Mechanical	
Operating Temperature	-30°C to 60°C (-22°F to 140°F)
Storage Temperature	-30°C to 85°C (-22°F to 185°F)
Relative Humidity	Up to 95%, non-condensing
Transceiver H x W x D	13.6 x 13.7 x 7.7 in. (34.5 x 34.8 x 19.6 cm)
Mount Lever Arm***	11 in. (28 cm)
Transceiver Weight	12 lbs (5.5 kg)

HXI, Gigalink™ 6451 Specifications

Statistical Availability and range performance vs. region of operation



Model	SLA	A	B	B ₁	B ₂	C	D ₁	D ₂	D ₃	E	F	G	H
Gigalink 6451	Range 20- 440 meters clear air												
	99.90%	420	405	410	400	395	390	375	355	330	405	325	290
	99.99%	390	360	370	350	340	330	315	295	265	355	257	200
	99.999%	345	305	320	295	285	270	250	235	215	215	209	130

Recommended ranges and statistical availabilities based on “Crane” Model calculations using published annual rain rates. Precision terminal alignment of +/- 0.45° is required to achieve predicted reliability at referenced ranges of operation.