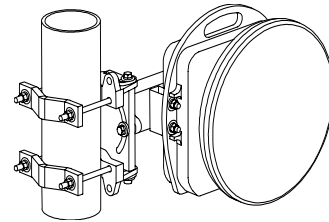


## HXI, Gigalink™ 6451 Specifications

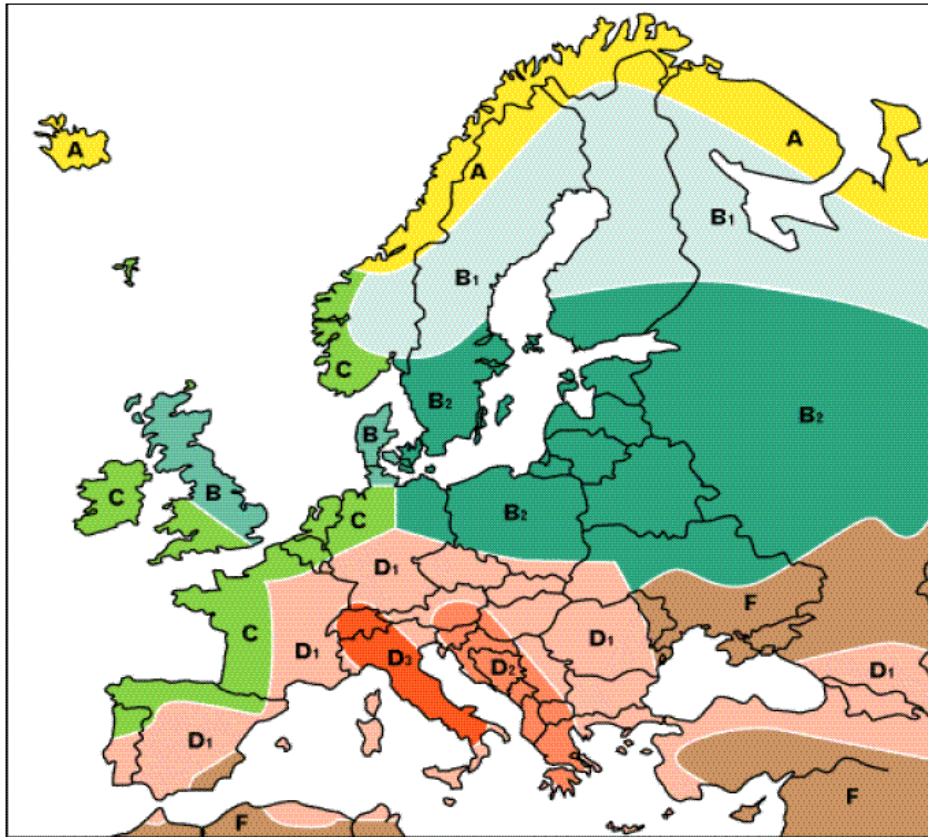
**High-Performance 1.25Gbps 60GHz Radio Link  
for light-licensed deployment**



<b>Operating Range</b>	<b>6451</b>
Minimum to Maximum Distance	20 m to 440 m
<b>Millimeter Wave Performance</b>	<b>6451</b>
Frequency	57.0 to 64.0 GHz
RF Injection Power into Antenna	10mW (+10dBm)
Antenna Type	Integral 13-in. parabolic
Antenna Gain	41dBi Minimum
3-dB Beam Width	0.9 degree
<b>Interfaces</b>	
Payload Interface	Gigabit Ethernet, 1000Base-SX, 850 nm, FC connector
Management	100Base-FX, MMF, 1310 nm, FC connector
Installation	10Base-T, RJ-45 Modular (with adapter cable)
DC Power	MIL-C-5015-type connector for 14- to 18-AWG three-conductor power cable
<b>Management</b>	
Installation Tools	Laptop-based GUI software provided
Remote Monitoring	via SNMP V1 or PC Based GUI
<b>Regulatory Compliance</b>	
Spectrum Rules	REC (09)01))
Electrical	UL - UL60950, EN-60950-1, IEC 609050-1
EMC	EN 55022, Emissions Class A, EN 301 489 Immunity
Laser Safety	CDRH - Class 1 (21 CFR 1040 per Laser Notice No. 50)
<b>Power</b>	
Input Voltage	-48 VDC nominal (-40 to -57 VDC)
Power Consumption	70W Max.
Maximum Input Current	1.5 Amps
<b>Environmental &amp; Mechanical</b>	
Operating Temperature	-30°C to 60°C (-22°F to 140°F)
Storage Temperature	-30°C to 85°C (-22°F to 185°F)
Relative Humidity	Up to 95%, non-condensing
Transceiver H x W x D	13.6 x 13.7 x 7.7 in. (34.5 x 34.8 x 19.6 cm)
Mount Lever Arm***	11 in. (28 cm)
Transceiver Weight	12 lbs (5.5 kg)

## HXI, Gigalink™ 6451 Specifications

*Statistical Availability and range performance vs. region of operation*





*Recommended ranges and statistical availabilities based on “Crane” Model calculations using published annual rain rates. Precision terminal alignment of +/- 0.45° is required to achieve predicted reliability at referenced ranges of operation.*

Model	SLA	A	B	B <sub>1</sub>	B <sub>2</sub>	C	D <sub>1</sub>	D <sub>2</sub>	D <sub>3</sub>	E	F	G	H
Gigalink 6451	<i>Range 20- 440 meters clear air</i>												
	99.90%	420	405	410	400	395	390	375	355	330	405	325	290
	99.99%	390	360	370	350	340	330	315	295	265	355	257	200
	99.999%	345	305	320	295	285	270	250	235	215	215	209	130

HXI, LLC  
 12 Lancaster County Road  
 Harvard, MA 01451  
 USA  
 (978)772-7774, [www.hxi.com](http://www.hxi.com)